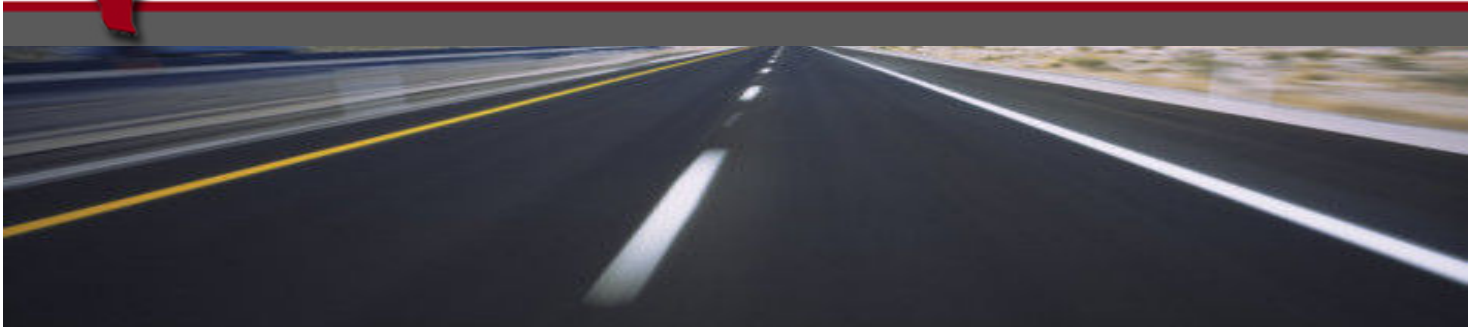




Up to Speed



LONE STAR AUTOMOBILE DEALERS ASSOCIATION



TexasMutual[®]
Insurance Company
HERE FOR TEXAS. HERE TO STAY.[®]

Toolbox Talks



Distracted Driving

- ❖ REACHING FOR A MOVING OBJECT AND TURNING AROUND IN YOUR SEAT ARE RISKIER THAN USING A CELLPHONE. BUT RISK IS ONLY HALF THE STORY. FREQUENCY IS WHAT SETS CELLPHONES APART.
- ❖ THE HUMAN BRAIN CANNOT MULTITASK. IT CAN ONLY TOGGLE BETWEEN TASKS.
- ❖ HANDS-FREE IS AS DANGEROUS AS HAND-HELD.
- ❖ THE HUMAN COST OF TRAFFIC ACCIDENTS IS THE MOST COMPELLING REASON FOR EMPLOYERS TO BAN CELLPHONE USE WHILE DRIVING. CELLPHONE-RELATED CRASHES CAN ALSO EXPOSE EMPLOYERS TO COSTLY LAWSUITS.
- ❖ DONE RIGHT, A CELLPHONE BAN DOES NOT AFFECT PRODUCTIVITY.



SafeHandTexas.org

GET MORE INFORMATION

- ❖ CELLPHONES, DRIVER FATIGUE, SPEEDING AND FAILURE TO WEAR SEAT BELTS ARE PRIMARY CAUSES OF TRAFFIC ACCIDENTS. VISIT TEXAS MUTUAL'S SAFEHANDTEXAS.ORG FOR FREE SAFETY TRAINING RESOURCES.



Save time...
...report online.

Don't waste time with paper forms. Submit your next injury report with the click of a mouse. Go to texasmutual.com, enter the required information, and we'll take it from there.

TexasMutual[®] online services are the fastest, most convenient means of reporting on-the-job injuries, claim information, and browsing for industry-specific safety resources. Find out more by visiting texasmutual.com today.

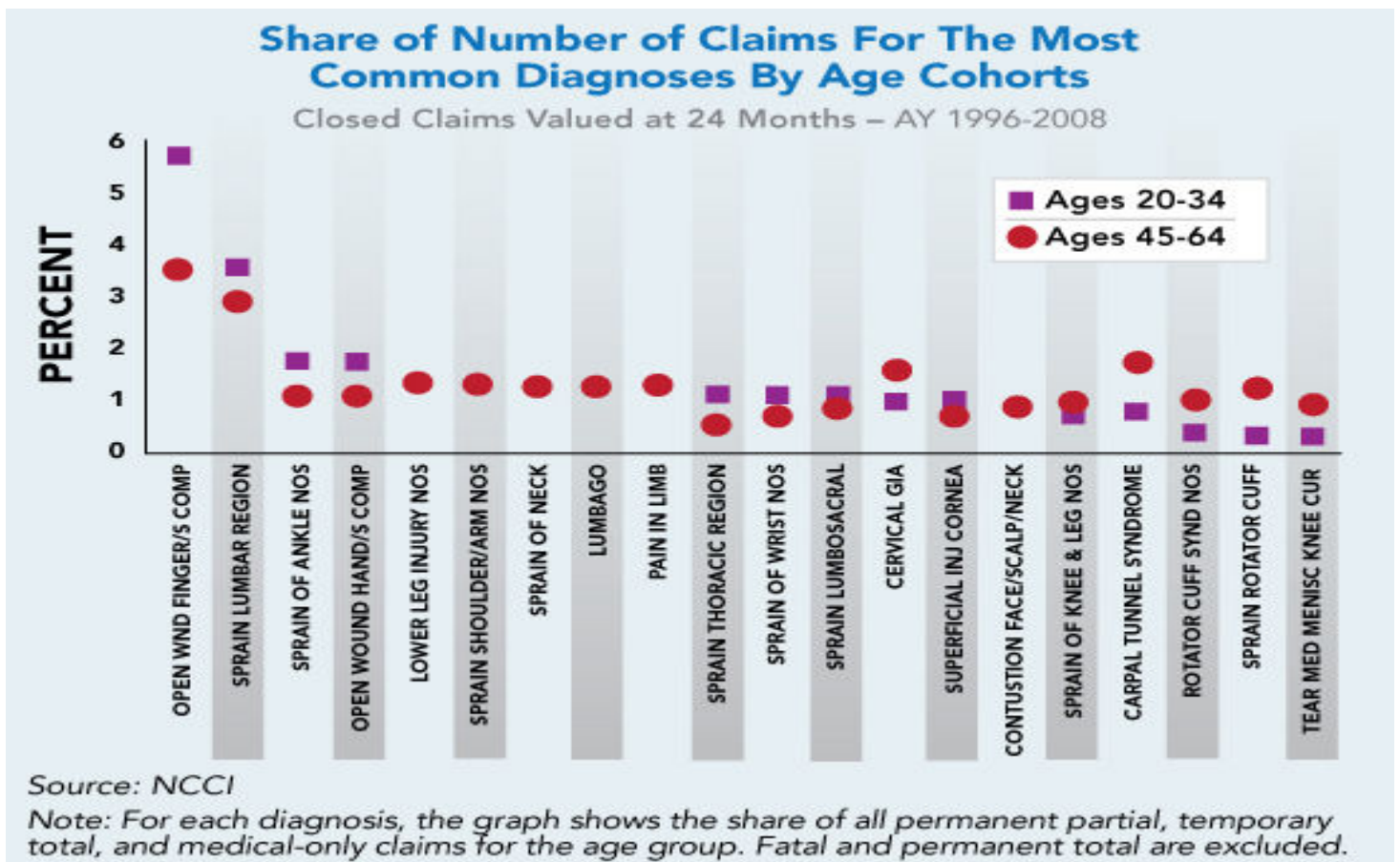
LSADA
IN THIS ISSUE...

- Go Ahead Get Defensive
- Save Time Report On-Line
- For Older Workers, The Game Has Changed Part 1
- Contact Us



For Older Workers, The Game Has Changed: Part 1

- ❖ THE WORKFORCE IS GETTING OLDER. PEOPLE ARE RETIRING LATER IN LIFE THAN EVER BEFORE. THIS TREND HAS BEEN A MAJOR CONCERN FOR THOSE IN THE HEALTH AND SAFETY FIELD BECAUSE THE COMMON KNOWLEDGE HAS BEEN THAT OLDER WORKERS ARE MORE PRONE TO SUFFER VERY EXPENSIVE INJURIES. HOWEVER, NEW RESEARCH FROM THE NATIONAL COUNCIL ON COMPENSATION INSURANCE (NCCI) HAS CAST DOUBT ON THIS CONVENTIONAL WISDOM, OR AT THE VERY LEAST POTENTIALLY CHANGED THE DEFINITION OF "OLDER WORKERS."
- ❖ NCCI STUDIED DIFFERENT AGE GROUPS AND THE RATE AT WHICH THEY GET INJURED. THEY FOUND YOUNGER WORKERS (UNDER 35) HAD SUBSTANTIALLY MORE CUTS ON THEIR FINGERS AND OLDER WORKERS (OVER 35) SUFFER MORE CASES OF CARPAL TUNNEL AND MORE CERVICAL INJURIES, ALTHOUGH THE NUMBERS ARE STARTLINGLY SIMILAR.



- ❖ THAT CERTAINLY QUIETS THE ARGUMENT ABOUT THE AGING WORKFORCE CAUSING MORE INJURIES, BUT WHAT ABOUT COST? THE RESEARCH SHOWS THAT THERE IS A SUBSTANTIAL COST DIFFERENCE BETWEEN YOUNGER AND OLDER WORKERS, BUT THE SPLIT ISN'T NECESSARILY WHERE YOU MIGHT EXPECT IT.